



BTone 2

advanced Bluetooth® Audio Interface



HQ Audio Bluetooth® Interface

PRAGMA BTone is a high-quality advanced Bluetooth® Audio Interface for reliable operation in fitness studios, hotels, bars, churches, schools and other locations.



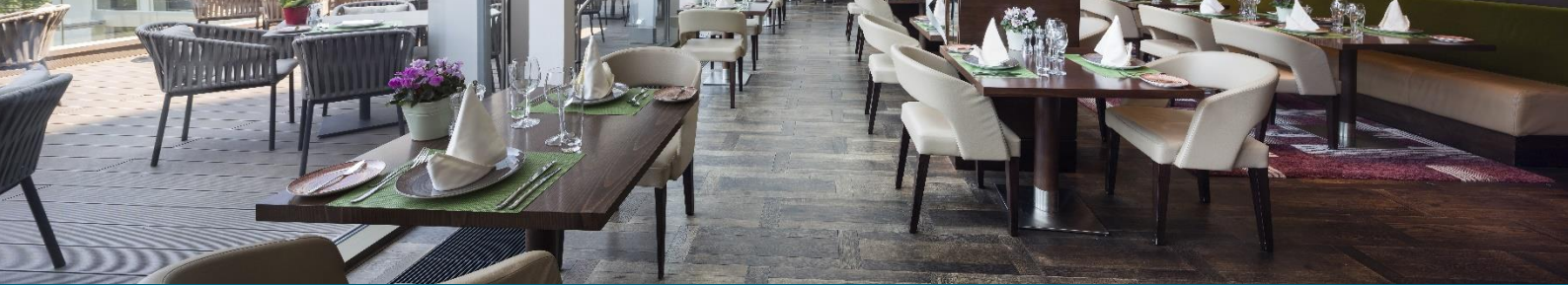
Versatile mounting Options

- ✓ Legrand®
- ✓ Surface mounting box
- ✓ EU/UK
- ✓ US single gang



Key Features

- ✓ individual naming
- ✓ 0dB sym Stereo Out
- ✓ simple / PIN-Code pairing
- ✓ aptX™, aptX™ LL, aptX™ HD
- ✓ Bluetooth® 5.0



Versions

BTone 2 CH



BTone 2 EU/UK



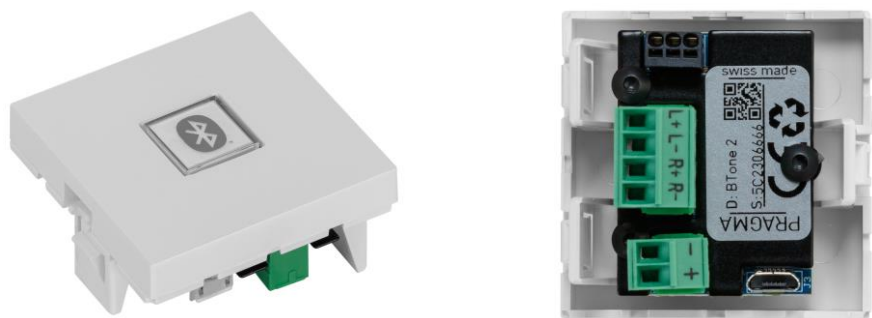
BTone 2 SM



BTone 2 FLF

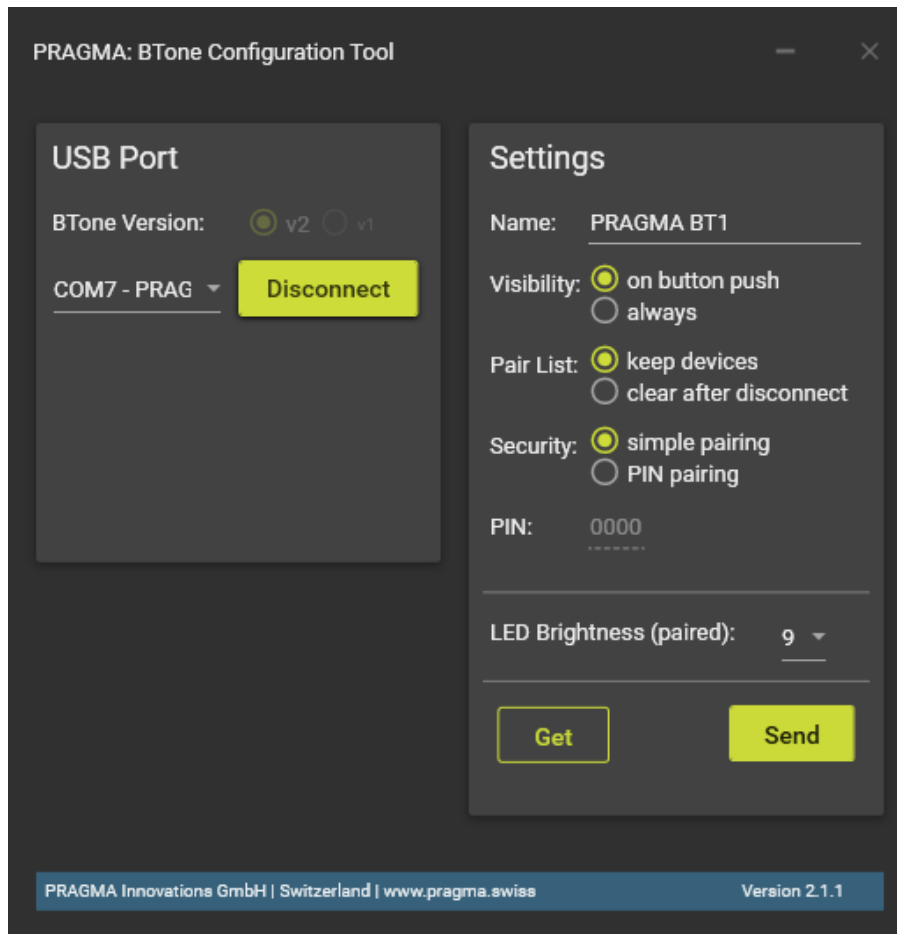


BTone 2 Legrand®



BTone 2 US





Technical specification

User Interface	RGB LED Button		
Bluetooth	5.0, Bi-Directional Audio		
aptX™ Audio Codec	aptX™, aptX™ LL, aptX™ HD		
Audio	0dB symmetric Stereo output		
Visibility	1. on button push (for 50sec) 2. always		
Power	5-30VDC, <1.35W		
Connector	Phoenix		
Housing	CH/EU/UK:	Plastic	
	US:	Aluminum	
Device dimensions	CH/EU/UK: 88x88x37mm	SM: 73x73x54mm	FLF: 63x38x30mm
	US: 114x70x40mm	Legrand: 45x45x30mm	
Device weight	CH/EU/UK: 80g	SM: 110g	FLF: 50g
	US: 110g	Legrand: 30g	
Production (CoO)	Switzerland		